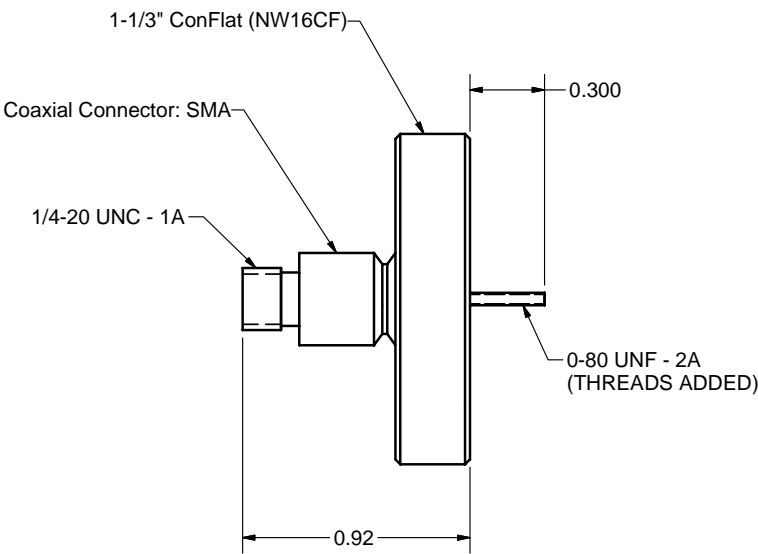
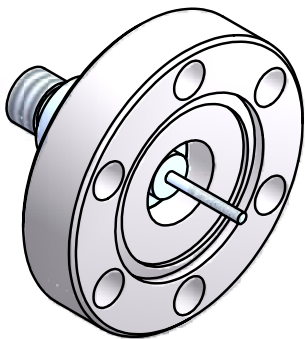


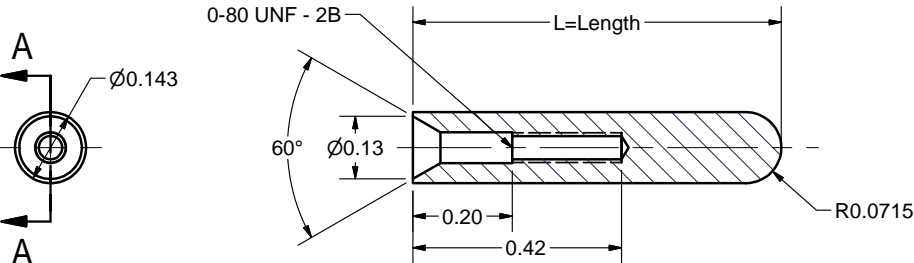
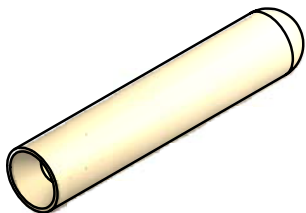
REVISIONS				
SYM.	ZONE	DESCRIPTION	DATE	APP.
A	D-3	ADDED NEW LENGTH (0.847") TO TABLE. ADDED C'SINK & CHAMFER TO FIELD PROBE. D.M.E.	2-1-07	J.O.S.
B	D3	60 DEG C'SINK WAS 120 DEG	2/9/07	TIO



SCALE 2



Modified Ceramaseal # 18046-02-CF



SECTION A-A
SCALE 4

FIELD PROBES
MATERIAL: OFE COPPER

Q_{EXT}	4×10^{11}	$L = 0.847''$	*
Q_{EXT}	2×10^{12}	$L = 0.7415''$	
Q_{EXT}	10^{13}	$L = 0.6925''$	

C	7102-033	REV. B
	SH. NO. 1 OF 1	

* USED ON ERL 2 CELL INJECTOR CAVITY.

FOR MACHINING LUBRICANT USE ONLY
ALKALINE DETERGENT LUBRICANT CIMSTAR 40
OR EQUIVALENT APPROVED BY CORNELL LEPP

		ITEM	DWG. NO.	DESCRIPTION			G1G2G3			REMARKS	REV.
					QUANTITY						
	PRINT DISTR.	PLOT DATE: 2/9/2007 CAD FILE NAME: 7102-033.idw									
	7102-033 SH. NO. 1 OF 1	CR-1	UNLESS OTHERWISE SPECIFIED: DIMENSIONS ARE IN INCHES: TOLERANCES ON: .00 ± .010 .000 ± .005 FRACTIONS ± 1/64 ANGLES ± 0.5° ALL SURFACES	 CORNELL UNIVERSITY Floyd R. Newman Laboratory Ithaca, NY 14853 INJECTOR CAVITY VERTICAL TEST: FIELD PROBES							
		REV. B	CHECKED BY: J. Sears APPROVED BY: J. Sears	DRAWN BY dme4	DRAWN FOR J. Sears	DATE 1/16/2007	SCALE		7102-033 SH. NO. 1 OF 1	REV. B	

INJECTOR CAVITY VERTICAL TEST:
FIELD PROBES